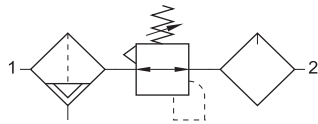


**Air Service Combined Unit,
Automatic drain**



Function:

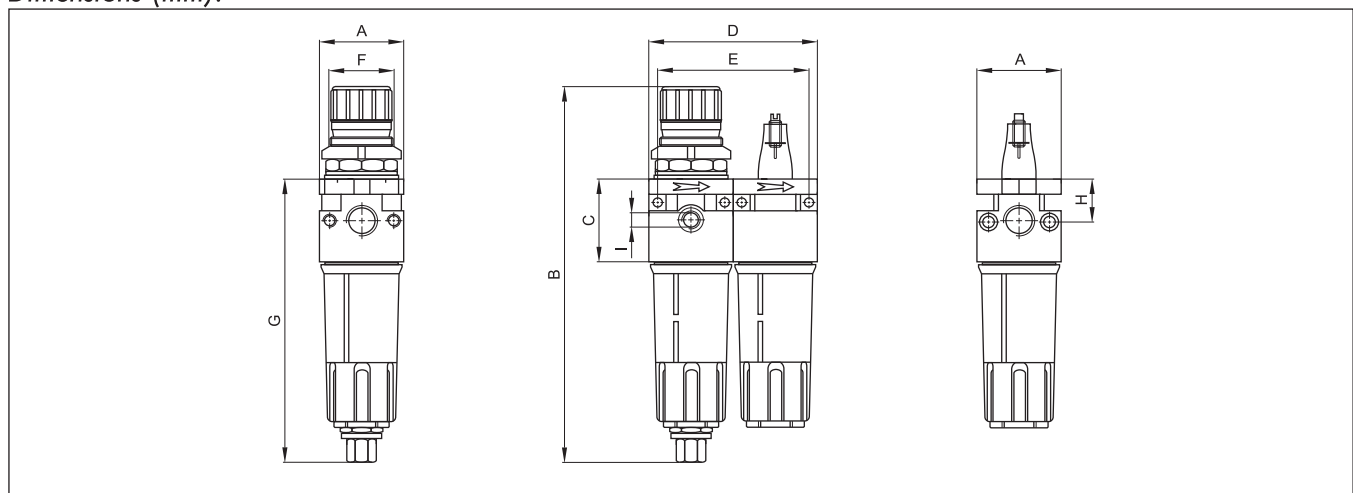
These service units (FR+L) are used to purify, regulate & lubricate the compressed air.



Technical Data:

| Type | APS2-1/4-A | APS2-3/8-A | APS2-1/2-A | APS2-3/4-A | APS2-1-A |
|---------------------------------|---|------------|------------|------------|----------|
| Art. No. | 121208 | 121218 | 121228 | 121238 | 121248 |
| Connection | G1/4 | G3/8 | G1/2 | G3/4 | G1 |
| Flow rate at 6 bar (NI/min) | 600 | 2250 | 2250 | 4700 | 4700 |
| Cup capacity (cm ³) | 13 | 47 | 47 | 175 | 175 |
| Fluid | Compressed air | | | | |
| Design | Sintered filter, manual drain, piston regulator, direct constant density lubricator | | | | |
| Mounting | Through holes, vertical | | | | |
| Lubrication adjustment | By micrometer screw | | | | |
| Filtration | 32 micron standard, 5 micron (on request) | | | | |
| Pressure range | Max. 18 bar | | | | |
| Regulation pressure | 0...12 bar | | | | |
| Temperature range | Max. 50 °C | | | | |
| Body | Zn+Al+Mg alloy, enamel painted | | | | |
| Weight (g) | 900 | 2,000 | 2,000 | 4,000 | 4,000 |

Dimensions (mm):



| Type | A | B | C | D | E | F | G | H | I |
|------------|----|-----|----|-----|-----|--------|-----|----|------|
| APS2-1/4-A | 42 | 180 | 42 | 84 | 76 | 30x1,5 | 145 | 21 | 1/8" |
| APS2-3/8-A | 60 | 240 | 60 | 120 | 109 | 38x2 | 180 | 30 | 1/8" |
| APS2-1/2-A | 60 | 240 | 60 | 120 | 109 | 38x2 | 180 | 30 | 1/8" |
| APS2-3/4-A | 80 | 325 | 80 | 160 | 146 | 55x2 | 240 | 40 | 1/4" |
| APS2-1-A | 80 | 325 | 80 | 160 | 146 | 55x2 | 240 | 40 | 1/4" |

Subject to change