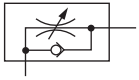


**Angle Flow Control Valve,**  
With flow adjustment in one direction  
Male / female thread



(Cylinder-in)



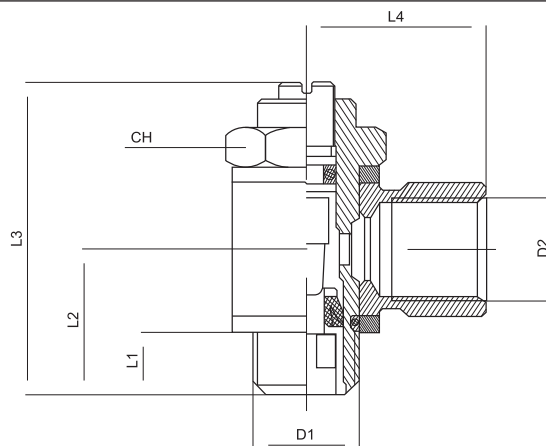
**Function:**

These angle type valves are used to regulate the flow of air only in one direction and allowed air to release freely in the opposite direction through check valve.

**Technical Data:**

Type	TCLV-M5-C	TCLV-1/8-C	TCLV-1/4-C	TCLV-3/8-C	TCLV-1/2-C
Art. No.	981404	981409	981418	981427	981435
Connection	M5	1/8"	1/4"	3/8"	1/2"
Flow rate (NI/min)	0...80	0...350	0...800	0...1200	0...3200
Fluid	Compressed air lubricated or non-lubricated				
Pressure range	0...10 bar				
Temperature range	-10...+70 °C				
Mounting	On cylinder				
Body	Brass, nickle-plated				
Seals	NBR				

**Dimensions (mm):**



Type	D1	D2	L1	L2	L3	L4	CH	Weight (g)
TCLV-M5-C	M5	M5	4	11	23.5	11	8	12
TCLV-1/8-C	1/8"	1/8"	6	16	36	17	14	34
TCLV-1/4-C	1/4"	1/4"	8	19	42	22	17	62
TCLV-3/8-C	3/8"	3/8"	9	22	52	26	20	98
TCLV-1/2-C	1/2"	1/2"	10	25	61	32	26	176