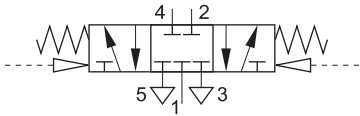


**Double Pilot Valve,**  
Spring centered, without sub-base



**Function:**

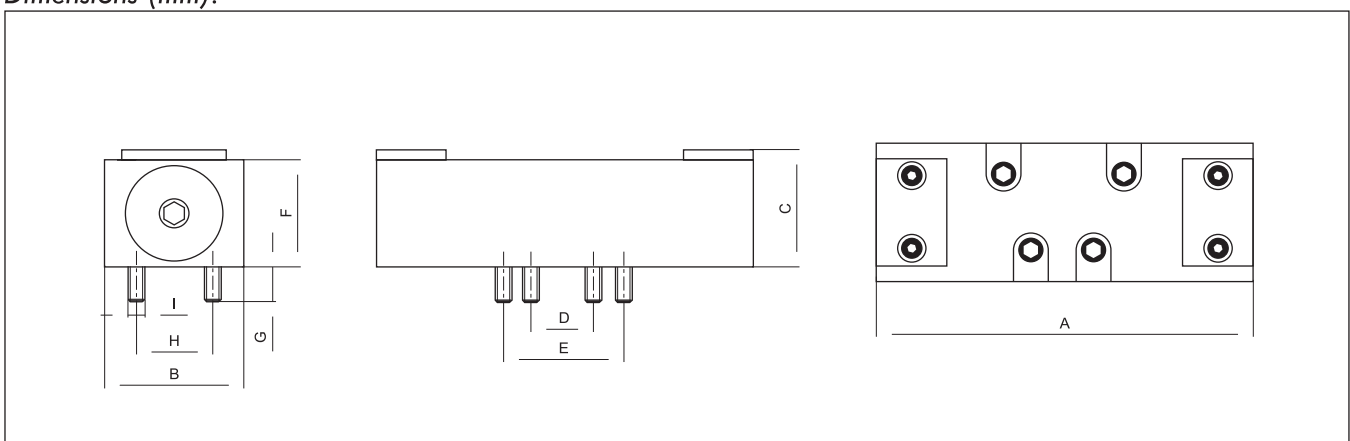
Pressure on the pilot port individually actuates the spool of the valve until the pilot signal is removed.

**Technical Data:**

| Type                        | PPVI-5/3C-D-1                              | PPVI-5/3C-D-2   |
|-----------------------------|--|-----------------|
| Art. No.                    | 52658                                      | 52666           |
| ISO size                    | 1  | 2               |
| Connection                  | 1/4" (Sub-base)                            | 3/8" (Sub-base) |
| Nominal diameter (mm)       | 5  | 8               |
| Flow rate at 6 bar (NI/min) | 840  | 1560            |
| Fluid                       | Filtered air, lubricated or non lubricated |                 |
| Design                      | Balanced spool                             |                 |
| Mounting                    | On sub-bases                               |                 |
| Operating pressure          | 1...10 bar                                 |                 |
| Pilot pressure              | 2 bar                                      |                 |
| Temperature range           | -10...+70 °C                               |                 |
| Body                        | Die casted zamak                           |                 |
| Seals                       | NBR  |                 |

**Note:** For sub-bases see sheet 4.5.9.

**Dimensions (mm):**



| Size | A   | B  | C  | D  | E  | F  | G   | H  | I  |
|------|-----|----|----|----|----|----|-----|----|----|
| 1    | 108 | 40 | 34 | 18 | 36 | 31 | 9   | 28 | M5 |
| 2    | 133 | 48 | 39 | 24 | 48 | 36 | 9.5 | 38 | M6 |