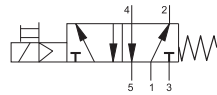


Solenoid Operated Valves
5/2-way valves, standard valves, external pilot air supply



Single Solenoid Valve,
With manual override, mechanical spring return



Function:

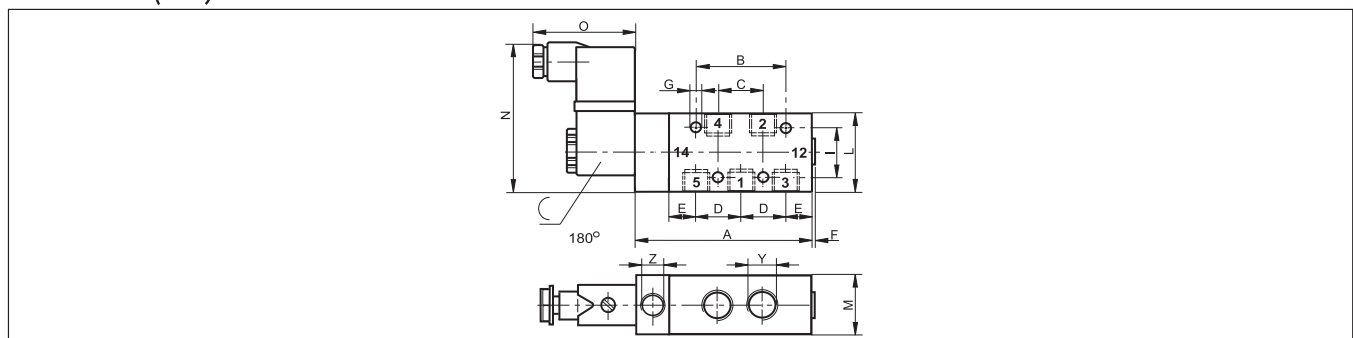
When the coil is energized, the valve shifts its normal position & remains shifted until the coil is de-energized.

Technical Data:

Type	PMV-5-1/8-P	PMV-5-1/4-P	PMV-5-3/8-P	PMV-5-1/2-P
Art. no.	639134	639136	639138	639140
Connection	G1/8	G1/4	G3/8	G1/2
Valve function	5/2 way			
Design	Piston spool			
Type of mounting	Via through-holes			
Normal dia (mm)	5	8	10	12
Std. nominal flow rate (l/min)	650	1450	2250	3000
Operating medium	Filtered compressed air, lubricated or unlubricated			
Operating pressure range	2...10 bar	1,5...10 bar	1,5...10 bar	1...10 bar
Pilot pressure	3...10 bar			
Temperature range	-10...+60 °C			
Operating voltage	12, 24, 48, V DC; 24,110, 230 (50...60 Hz) VAC			
Power consumption	DC voltage 3 W; AC voltage 5 VA			
Protection class	IP 65			
Materials	Body: Wrought aluminium alloy, anodised; Seals: Nitrile rubber			
Weight (g)	230	500	520	700

Note: For magnetic coils see sheet 4.6.1

Dimensions (mm):



Connection (Y)	A	B	C	D	E	F	G	I	L	M	N	O	Z
G1/8	76	36	18	18	12	1	4,5	25	36	22	65	48	G1/8
G1/4	96	44	22	22	18	-	5,5	36	50	30	72	48	G1/8
G3/8	110	56	28	28	19	1	6,6	36	50	30	72	48	G1/8
G1/2	130	64	32	32	25	-	6,6	40	60	30	78	48	G1/8