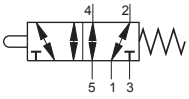
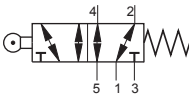


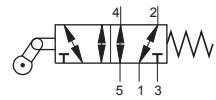
Stem Actuated Valve,
Type MV-5-1/8



Roller Lever Valve,
Type MR-5-1/8



Roller Lever Valve With Idle return,
Type ML-5-1/8



Function:

Mechanically pressing of the actuators, shift the spool of the valve, until the pressing is removed.

Technical Data:

Type	MV-5-1/8	MR-5-1/8	ML-5-1/8
Art. no.	63916	63915	63914
Connection	G1/8		
Design	Piston spool, with mechanical spring		
Type of mounting	2 through-holes		
Nominal dia (mm)	3.5		
Std. nominal flow rate (l/min)	280		
Operating medium	Filtered compressed air, lubricated or unlubricated		
Operating pressure range	0...10 bar \square		
Actuating force at 6 bar (N)	14	10	10
Temperature range	-10...+60 °C		
Materials	Body: Wrought aluminium alloy, anodised; Seals: Nitrile rubber		
Weight (g)	65	77	79

Dimensions (mm):

MV-5-1/8	MR-5-1/8	ML-5-1/8