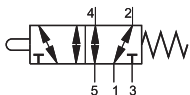
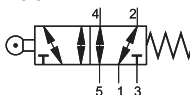


Stem Actuated Valve,
Type MV-5-M5



Roller Lever Valve,
Type MR-5-M5



Roller Lever Valve With Idle return,
Type ML-5-M5



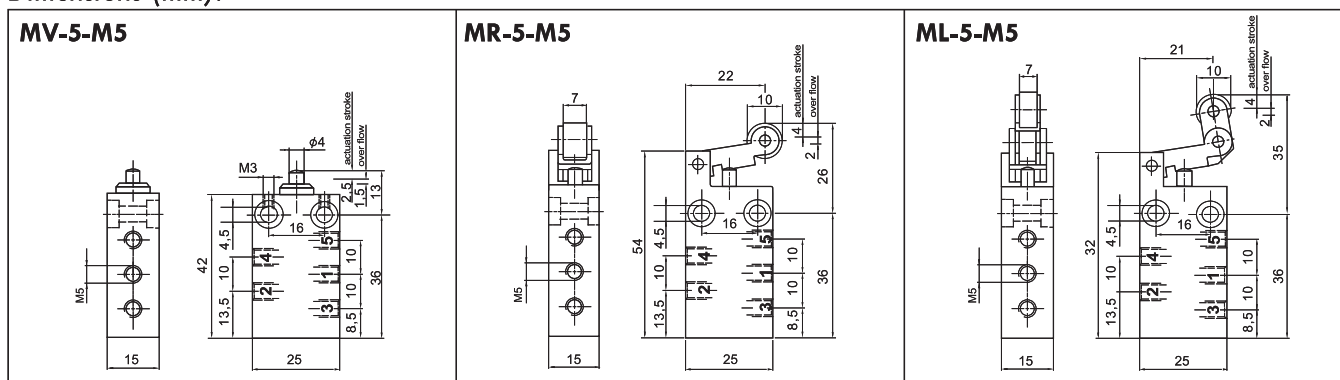
Function:

Mechanically pressing of the actuators, shift the spool of the valve, until the pressing is removed.

Technical Data:

Type	MV-5-M5	MR-5-M5	ML-5-M5
Art. no.	63908	63907	63906
Connection	M5		
Design	Piston spool, with mechanical spring		
Type of mounting	2 through-holes		
Nominal dia (mm)	2		
Std. nominal flow rate (l/min)	125		
Operating medium	Filtered compressed air, lubricated or unlubricated		
Operating pressure range	0...10 bar		
Actuating force at 6 bar (N)	14	9	9
Temperature range	-10...+60 °C		
Materials	Body: Wrought aluminium alloy, anodised; Seals: Nitrile rubber		
Weight (g)	43	51	54

Dimensions (mm):



Subject to change