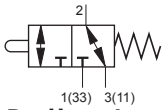
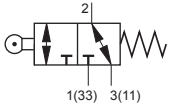


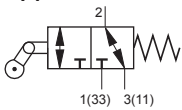
Stem Actuated Valve,
Type MV-3-M5



Roller Lever Valve,
Type MR-3-M5



Roller Lever Valve With Idle return,
Type ML-3-M5



Function:

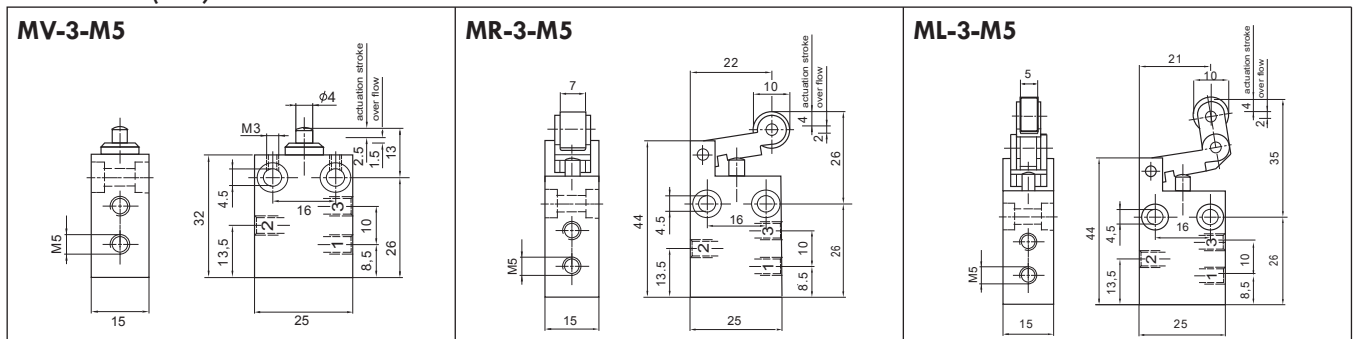
Mechanically pressing of the actuators, shift the spool of the valve, until the pressing is removed.

If pressure is applied to port 1 the function is normally closed. If pressure is applied to port 3 the function is normally open.

Technical Data:

Type	MV-3-M5	MR-3-M5	ML-3-M5
Art. no.	63904	63903	63902
Connection	M5		
Design	Piston spool, with mechanical spring		
Type of mounting	2 through-holes		
Nominal dia (mm)	2		
Std. nominal flow rate (l/min)	125		
Operating medium	Filtered compressed air, lubricated or unlubricated		
Operating pressure range	0...10 bar □		
Actuating force at 6 bar (N)	14	9	9
Temperature range	-10...+60 °C		
Materials	Body: Wrought aluminium alloy, anodised; Seals: Nitrile rubber		
Weight (g)	33	41	44

Dimensions (mm):



Subject to change