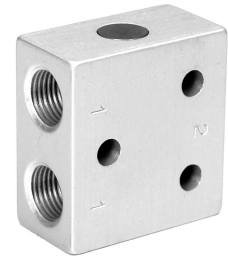
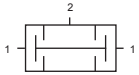


## And Gate (Dual-pressure Valve), Female thread



### Function:

The And-gate has two inputs (1) and one output (2).

The dual-pressure valve is used when at least (2) signals are required before a signal is passed on

Only when both inputs are pressurised output (2) is pressurised.

If two different pressures are applied the lower pressure is fed to output (2).

In case of only one signal at one of the two ports (1), the output (2) is blocked.

### Technical Data:

<b>Type</b>	<b>AV-1/8</b>
Art. no.	63947
Connection	G1/8
Type of mounting	Via through-holes
Norminal dia (mm)	3,5
Std. nominal flow rate (l/min)	280
Operating medium	Filtered compressed air, lubricated or unlubricated
Operating pressure range	1 ... 10 bar
Temperature range	-10...+60 °C
Materials	Body: Wrought aluminium alloy, anodised; Seals: Nitrile rubber
Weight (g)	40

### Dimensions (mm):

