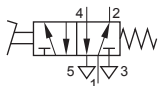


**Foot Valve,
Spring return
Type PFV-5-1/4-S**

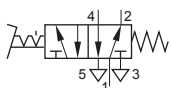


Function:

When the pedal is pressed, the valve shifts and retain its position until the pedal is released.



**Foot Valve,
With mechanical detent
Type PFV-5-1/4-D**



Function:

When the pedal is pressed, the valve shifts and retains its position until the detent lever is released.



Technical Data:

Type	PFV-5-1/4-S	PFV-5-1/4-D
Art. no.	108215	108216
Connection	G1/4	
Valve function	5/2-way	
Design	Poppet valve, directly actuated	
Type of mounting	2 through-holes in housing	
Normal dia (mm)	7	
Std. nominal flow rate (l/min)	655	
Operating medium	Filtered compressed air, lubricated or unlubricated	
Operating pressure range	0...8 bar	
Actuating force at 6 bar (N)	52	
Temperature range	-10...+60 °C	
Materials	Body: Die-aluminium; Seals: Nitrile rubber	
Weight (g)	700	

Dimensions (mm):

