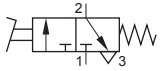
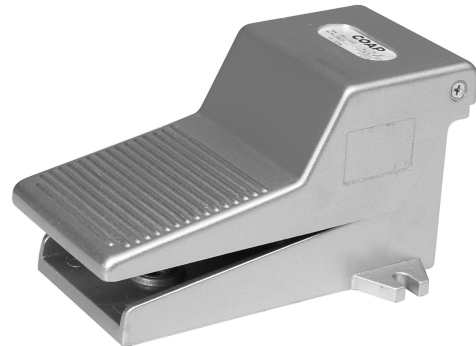


**Foot Valve,  
Spring return  
Type PFV-3-1/4-S**

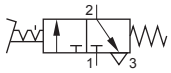


**Function:**

When the pedal is pressed, the valve shifts and retain its position until the pedal is released.



**Foot Valve,  
With mechanical detent  
Type PFV-3-1/4-D**



**Function:**

When the pedal is pressed, the valve shifts and retains its position until the detent lever is released.



**Technical Data:**

Type	PFV-3-1/4-S	PFV-3-1/4-D
Art. no.	108213	108214
Connection	G1/4	
Valve function	3/2-way	
Design	Poppet valve, directly actuated	
Type of mounting	2 through-holes in housing	
Norminal dia (mm)	7	
Std. nominal flow rate (l/min)	655	
Operating medium	Filtered compressed air, lubricated or unlubricated	
Operating pressure range	0...8 bar	
Actuating force at 6 bar (N)	52	
Temperature range	-10...+60 °C	
Materials	Body: Die-aluminium; Seals: Nitrile rubber	
Weight (g)	700	

**Dimensions (mm):**

