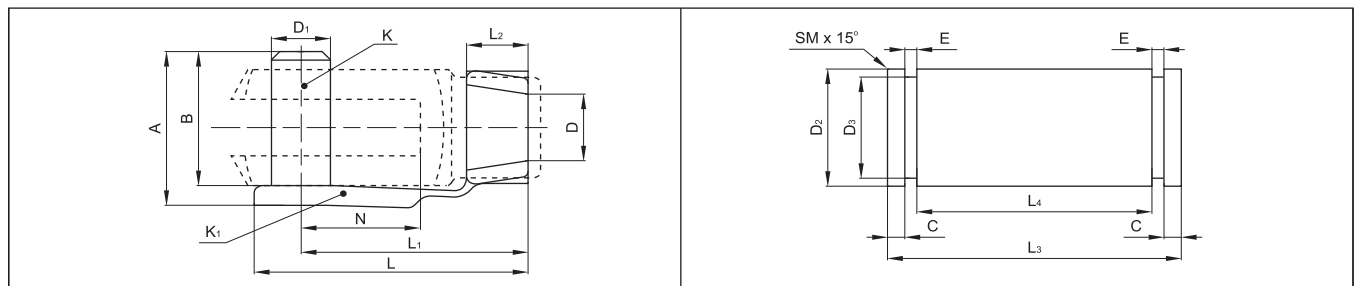
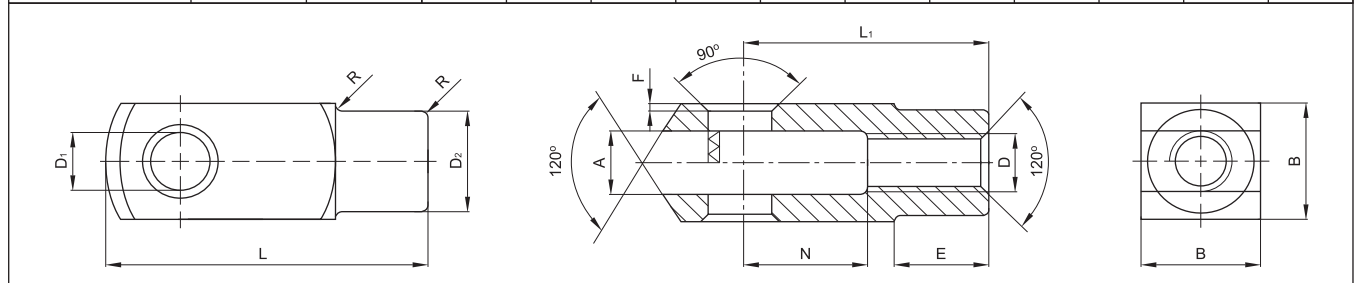


**Yokes with clevis & lockable pin,**  
With mounting bolts

Material: steel (Fe Zn 8)  
Dimensions: In millimeters



Type	Art. No.	D	A <sub>B12</sub>	B	D <sub>1</sub> <sub>H8</sub>	D <sub>2</sub>	E	F	L	L <sub>1</sub>	N	R	Weight (g)
YCC-M4	116801	M4	4	8	4	8	6	0,5	21	16	8	0,5	5
YCC-M6	116803	M6	6	12	6	10	9	0,5	31	24	12	0,5	15
YCC-M8	116806	M8	8	16	8	14	12	0,5	42	32	16	0,5	36
YCC-M10X1.25	116809	M10X1.25	10	20	10	18	15	0,5	52	40	20	0,5	70
YCC-M12X1.25	116812	M12X1.25	12	24	12	20	18	0,5	62	48	24	0,5	121
YCC-M16X1.5	116815	M16X1.5	16	32	16	26	24	1	83	64	32	1	250
YCC-M20X1.5	116818	M20X1.5	20	40	20	34	30	1	105	80	40	1	550
YCC-M27X2	116821	M27X2	30	55	30	48	38	1	148	110	54	1	1,460
YCC-M36X2	116823	M36X2	35	70	35	60	40	1	148	144	72	1	3,270



Type	Rod thread D	D <sub>1</sub>	A	B	L	L <sub>1</sub>	L <sub>2</sub>	N	Weight (g)
YCC-M4	M4	4	11	9	19	15	5	8	2
YCC-M6	M6	6	16	14	28	23	6	12	5
YCC-M8	M8	8	22	19	37	31	8	16	11
YCC-M10X1.25	M10X1.25	10	26	23	46	39	10	20	19
YCC-M12X1.25	M12X1.25	12	32	28	55	47	12	24	32
YCC-M16X1.5	M16X1.5	16	40	36	72	62	14	32	67
YCC-M20X1.5	M20X1.5	20	48	44	88	72	16	40	130

Type	Rod thread D	D <sub>2</sub>	D <sub>3</sub>	C	E	L <sub>3</sub>	L <sub>4</sub> +0.2 0	Weight (g)
YCC-M27X2	M27X2	30	28.6	3.4	1.6	65	55	350
YCC-M36X2	M36X4	35	33.4	5.4	1.6	84	70	620

Subject to change