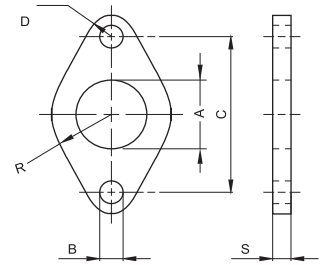


Front & Rear Flange Mounting

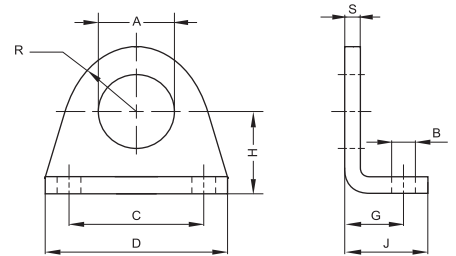
Material: steel (Fe 37)
Treatment: White zine coating
Dimensions: In millimeters



Type	Art. No.	Piston Ø (mm)	A <small>+0.3 +0.1</small>	B <small>H13</small>	C <small>JS13</small>	D <small>±0.2</small>	R <small>±0.2</small>	S <small>±0.2</small>	Weight (g)
FEM-8	54453	8 – 10	12	4.5	30	5	11	3	12
FEM-12	54456	12 – 16	16	5.5	40	6	15	4	26
FEM-20	54459	20 – 25	22	6.6	50	8	20	5	50

Angled Bracket Foot Mounting

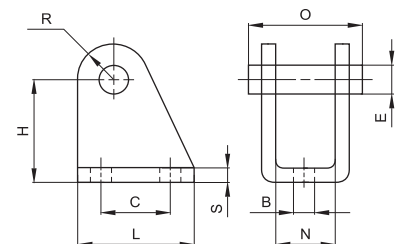
Material: steel (Fe 37)
Treatment: White zine coating
Dimensions: In millimeters



Type	Art. No.	Piston Ø (mm)	A <small>+0.2 +0.1</small>	B <small>H13</small>	C <small>JS13</small>	D	G <small>+0.3 0</small>	H <small>±0.2</small>	J	R <small>max.</small>	S <small>±0.2</small>	Weight (g)
AFM-8	54454	8 – 10	12	4.5	25	35	11	16	16	10	3	20
AFM-12	54457	12 – 16	16	5.5	32	42	14	20	20	12.5	4	40
AFM-20	54460	20 – 25	22	6.6	40	54	17	25	25	20	5	90

Female Hinge Mounting

Material: steel (Fe 37)
Treatment: White zine coating
Dimensions: In millimeters



Type	Art. No.	Piston Ø (mm)	B <small>H13</small>	E <small>f8</small>	C <small>JS13</small>	H <small>±0.2</small>	L	N <small>E9</small>	O	R <small>max.</small>	S <small>±0.2</small>	Weight (g)
FHM-8	54455	8 – 10	4.5	4	12.5	24	20	8.1	17	5	2.5	20
FHM-12	54458	12 – 16	5.5	6	15	27	25	12.1	23	7	3	36
FHM-20	54461	20 – 25	6.6	8	20	30	32	16.1	29.5	10	4	78