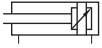
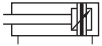


Double Acting Cylinder

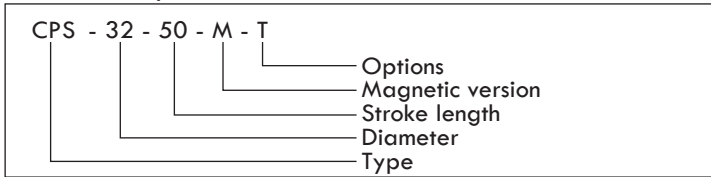
Type CPS-...
With adjustable cushioning at both ends



Type CPS-...M
With magnet for proximity sensing



Order example:



Technical Data:

Operating medium	Filtered compressed air
Operating pressure	1.5 ... 10 bar
Temperature range	-20 ... + 80 °C
Piston Ø	32, 40, 50, 63, 80, 100 & 125 mm
Stroke length	10 ... 2000 mm

Materials:

Cylinder barrel	Wrought aluminium alloy, smooth anodised
Piston rod	C 1050-50 micron hard chrome coated
Caps, bearing & end	Die-cast aluminium
Piston	Die-cast aluminium
Seals	Polyurethane, nitrile rubber

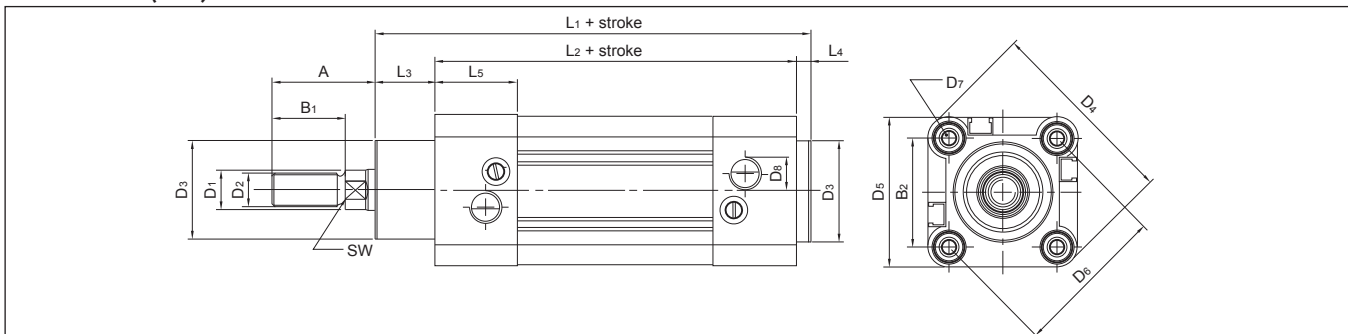
Options:

T	Through piston rod	
E	Extended piston rod	
A	Acid resistant piston rod	
H	Heat resistant seals max. 150 °C	
F	Female thread on piston rod	
M	Extended male thread on piston rod	

Theoretical forces at 6 bar:

Piston Ø (mm)	Advancing force (N)	Retracting force (N)
32	480	415
40	750	633
50	1,180	990
63	1,860	1,680
80	3,010	2,720
100	4,710	4,415
125	7,360	6,880

Dimensions (mm):



Note: For mounting attachments & rod components see section (3.5.0 Cylinder accessories).

Ø (mm)	A	B ₁	B ₂	D ₁ Ø	D ₂	D ₃ Ø	D ₄	D ₅	D ₆ Ø	D ₇	D ₈	L ₁ + stroke	L ₂ + stroke	L ₃	L ₄	L ₅	SW
32	30	22	32.5	12	M10x1.25	30	59	45	46	M6	G1/8	116	94	18	4	25	10
40	34	24	38	16	M12x1.25	35	70.2	54	53.7	M6	G1/4	129	105	20	4	27	14
50	41	32	46.5	20	M16x1.5	40	84.2	65	65.5	M8	G1/4	138	106	28	4	29.5	17
63	42	32	56.5	20	M16x1.5	45	99.5	76	80	M8	G3/8	152	121	27	4	34.5	17
80	52	40	72	25	M20x1.5	45	123.8	94	101.8	M10	G3/8	167	128	34	5	35	22
100	52.5	40	89	25	M20x1.5	55	148.8	112	125.9	M10	G1/2	182.5	138	38.5	6	38	22
125	73	54	110	32	M27x2	60	179.5	134	155.5	M12	G1/2	213	160	46	7	44	27

Subject to change