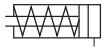


## Single Acting Cylinder

Type CPMS-...  
Spring return and elastic cushioning rings at end positions



Type CPMS-...M  
With magnet for proximity sensing



Order example:

CPMS - 25 - 10 - M	
	Magnetic version
	Stroke length
	Diameter
	Type

### Technical Data:

Operating medium	Filtered compressed air
Operating pressure	1.2 ... 10 bar
Temperature range	-35 ... + 80°C
Piston Ø	8, 10, 12, 16, 20 & 25 mm
Stroke length	10 ... 50 mm
Standard stroke	10, 25, 50 mm

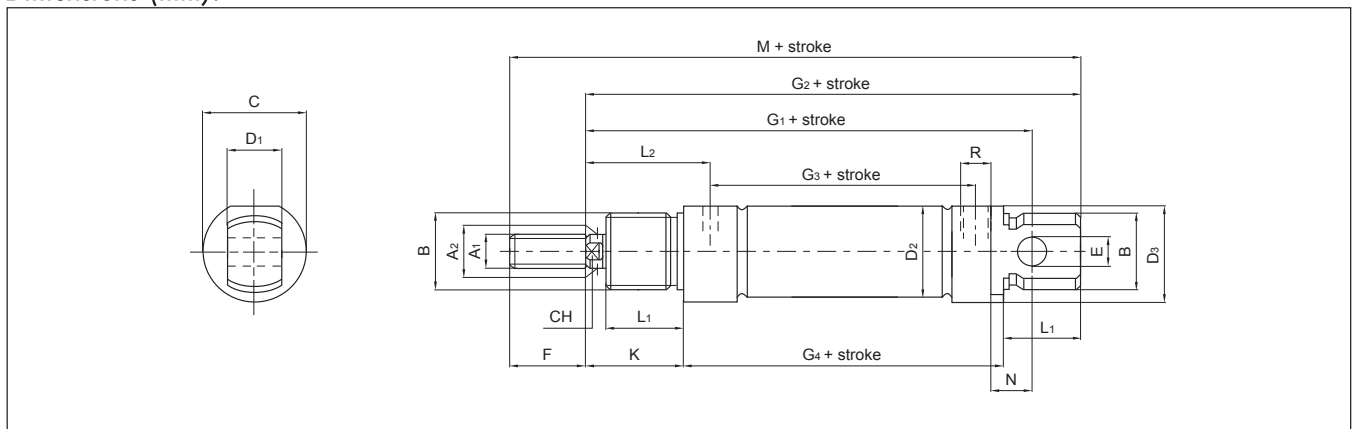
### Materials:

Cylinder barrel	AISI 304 - High-alloy stainless steel
Piston rod	AISI 303 - High-alloy stainless steel
Caps, bearing & end	Wrought aluminium alloy
Piston	brass
Seals	Polyurethane, nitrile rubber
Spring	Spring steel

### Theoretical forces at 6 bar:

Piston Ø (mm)	Advancing force (N)	Spring return force (N)					
		Stroke 10		Stroke 25		Stroke 50	
		Min.	Max.	Min.	Max.	Min.	Max.
8	19	4.5	5.2	3.9	5.2	2.5	5.2
10	36	4.5	5.2	3.9	5.2	2.5	5.2
12	49	5.7	6	5.1	6	4.1	6
16	87.5	15	17.5	11.5	17.5	5.3	17.5
20	141.5	18.2	19.5	16.2	19.5	12.5	19.5
25	246.5	21.3	23.5	18	23.5	12.9	23.5

### Dimensions (mm):



Note: For mounting attachments & rod components see section (3.5.0 Cylinder accessories).

Ø (mm)	A <sub>1</sub>	A <sub>2</sub>	B	C	D <sub>1</sub>	D <sub>2</sub>	D <sub>3</sub>	E	F	G <sub>1</sub>	G <sub>2</sub>	G <sub>3</sub>	G <sub>4</sub>	K	L <sub>1</sub>	L <sub>2</sub>	N	CH	R	M
8	M4	4	M12x1.25	16	8	9.27	15	4	12	64	74	36	46	16	12	21	6	/	M5	86
10	M4	4	M12x1.25	16	8	11.27	15	4	12	64	74	36	46	16	12	21	6	/	M5	86
12	M6	6	M16x1.5	19	12	13.27	18	6	16	75	88	38	48	22	18	27	9	5	M5	104
16	M6	6	M16x1.5	19	12	17.27	18	6	16	82	93	43	53	22	18	27	9	5	M5	109
20	M8	8	M22x1.5	27	16	21.27	25.5	8	20	95	111	51.5	67	24	20	32	12	7	1/8"	131
25	M10x1.25	10	M22x1.5	30	16	26.5	28.5	8	22	104	118	52	68	28	22	36	12	9	1/8"	140

Subject to change